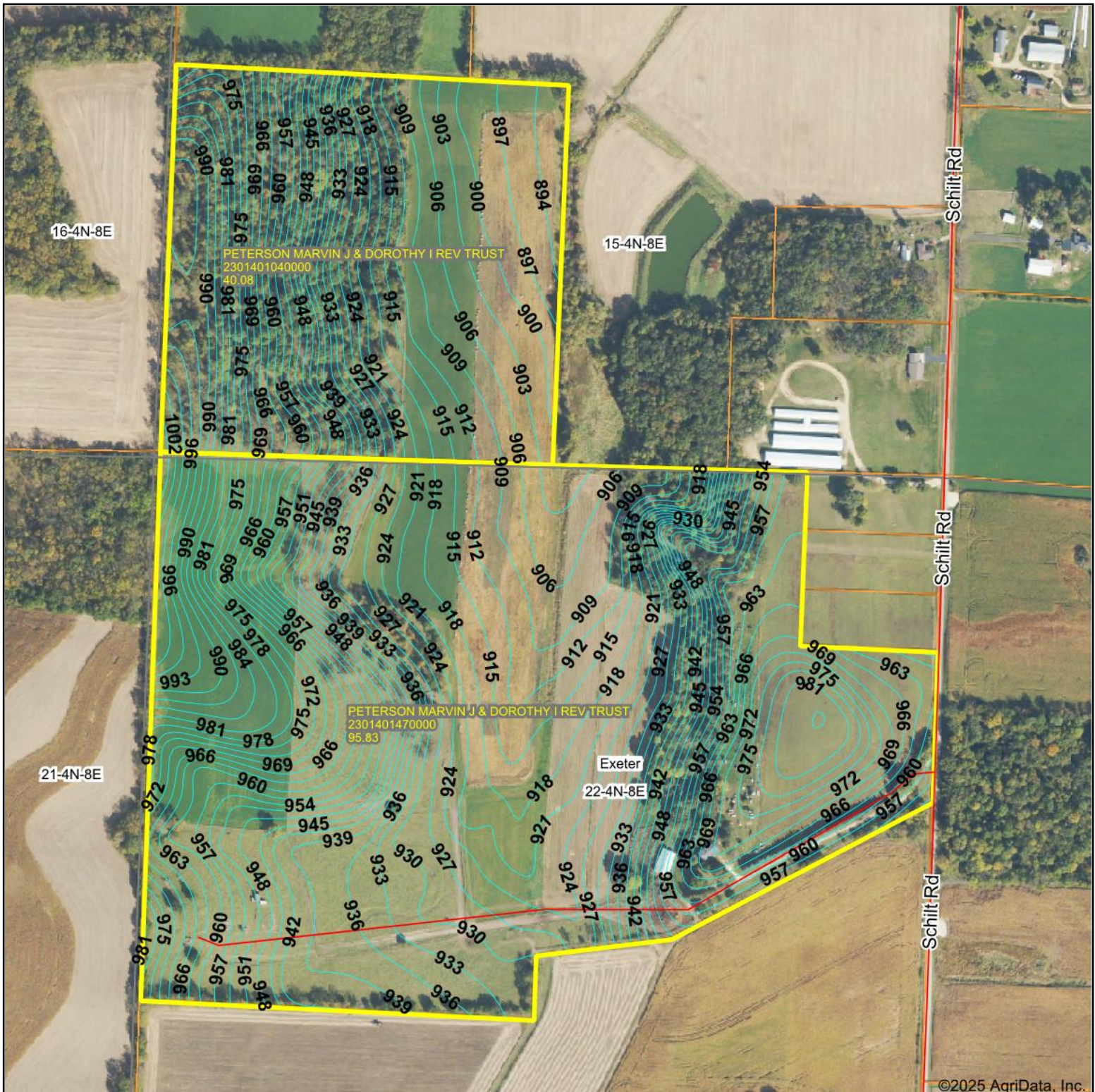


# Topography Contours



Source: USGS 10 meter dem

Interval(ft): 3.0

Min: 892.1

Max: 1,006.4

Range: 114.3

Average: 942.4

Standard Deviation: 27.07 ft

0ft 529ft 1059ft



11/6/2025

22-4N-8E  
Green County  
Wisconsin

Boundary Center: 42° 48' 47.91, -89° 32' 27.63

Maps Provided By:



© AgriData, Inc. 2023

www.AgriDataInc.com